

Circularité dans la construction

Connaissance





Photo credit: Photo by Wilmer Martinez on Unsplash



Photo credit: Photo by Ihor Malytskyi on Unsplash



Photo credit: Photo by Cherie Birkner on Unsplash

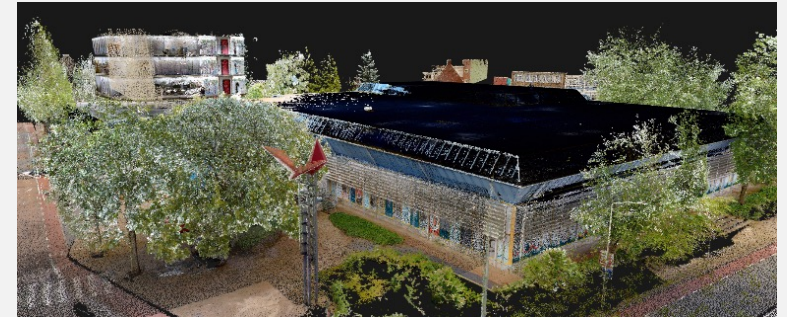
TECHNOLOGIE

Photo credit: Photo by Wilmer Martinez on Unsplash

Scan 3D

Pour obtenir une vision la plus précise possible du bâtiment

- Nuage de points
- Images 360°



Computer Vision

Pour identifier automatiquement les équipements d'un bâtiment

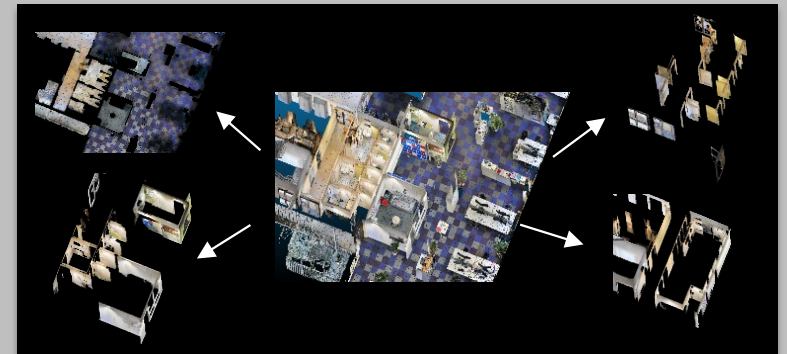
- Détection d'objet
- Inventaire



Segmentation 3D

Pour diviser un nuage de points en sous-ensemble cohérent

- Calcul de quantité
- Modélisation BIM



ECHELLE

Photo credit: Photo by Ihor Malyskiy on Unsplash

Citoyen

Pour fournir de l'information et des produits

- Transparence
- Marché d'occasion

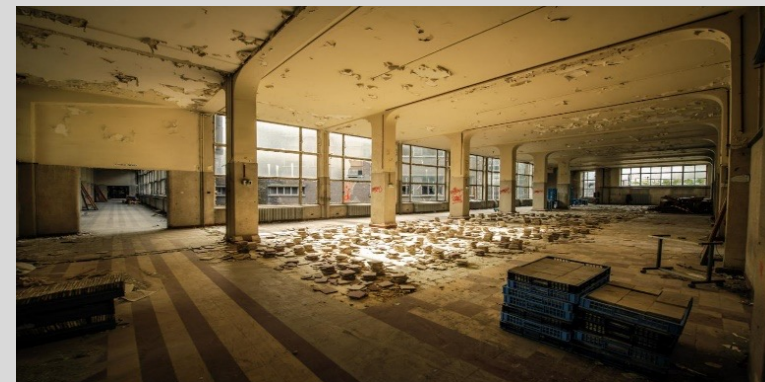
Reusinte d



Bâtiment

Pour aider à prendre les bonnes décisions pour le bien-être commun

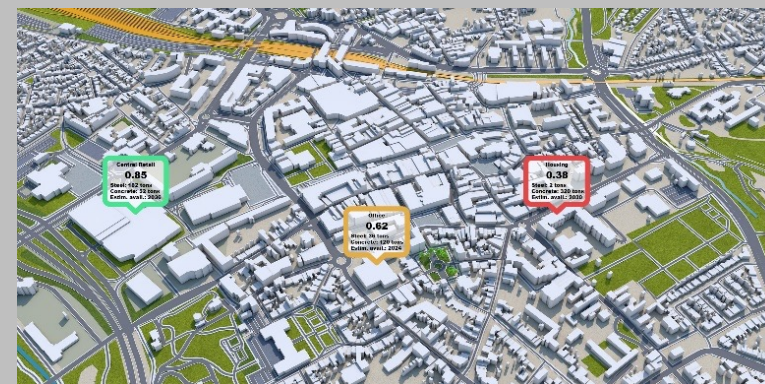
- Démolition vs. Déconstruction
- Analyse Coûts-benefices



Ville/Territoire

Pour organiser la stratégie et gérer les ressources

- Gisement urbain
- Plateforme de stockage et de redistribution



DURABILITE

EVERY PERSON MAKES A DIFFERENCE
EVERY PERSON MAKES A DIFFERENCE
EVERY PERSON MAKES A DIFFERENCE
EVERY PERSON MAKES A DIFFERENCE
EVERY PERSON MAKES A DIFFERENCE
EVERY PERSON MAKES A DIFFERENCE
EVERY PERSON MAKES A DIFFERENCE
EVERY PERSON MAKES A DIFFERENCE
~~EVERY PERSON MAKES A DIFFERENCE~~
~~EVERY PERSON MAKES A DIFFERENCE~~

SUSTAINABLE
FASHION
MATTERZ

LESS = LESS
NEW = CO₂

WE NEVER
STOP VOTING
© DORVILLE
FASHION
MATTERZ

Photo credit: Photo by Cherie Birkner on Unsplash

Photo credit: Photo by Cherie Birkner on Unsplash

Pour sauvegarder les matières premières et l'énergie

- # Etendre la durée de vie

- 
- A photograph of Earth from space at night, showing city lights and the curvature of the planet. The image captures the dark blue and black surface of the Earth, with numerous bright yellow and white lights from cities and towns scattered across the landmasses. The horizon line is visible, showing the curvature of the planet against the blackness of space. The lights are concentrated in clusters, indicating urban areas, and some long, thin lines of light suggest major transportation routes or rivers. The overall scene is a stunning view of our planet from a high-altitude perspective.
- Photo credit: Photo by Nasa on Unsplash

Photo credit: Photo by Nasa on Unsplash

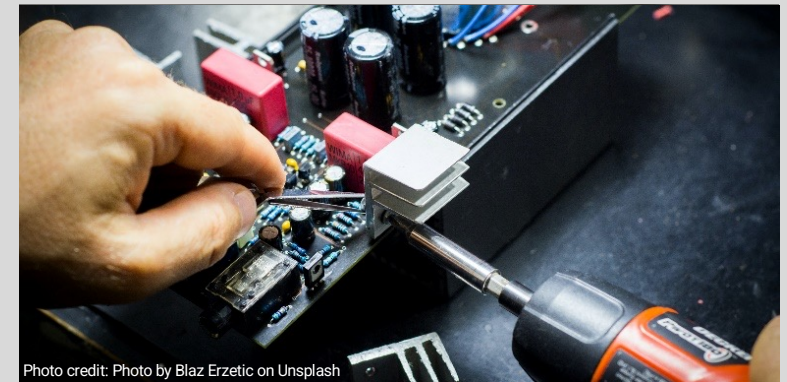


Photo credit: Photo by Blaz Erzetic on Unsplash

Pour éviter de créer de nouveaux déchets

-
- A large, collapsed wooden building, possibly a barn or house, lying in a field of grass and mud. The structure is heavily damaged, with debris scattered around. The sky is overcast.

Photo credit: Photo by Roger Starnes on Unsplash

Visualiser et réserver l'objet qui vous intéresse



Profilstütze - StSt-6

Information

Classifications

Imbedded Materials

Reuse Properties

Reuse Potential	
Quality Good	Très bon état
Reuse Decision	
Status	
Historical Value	

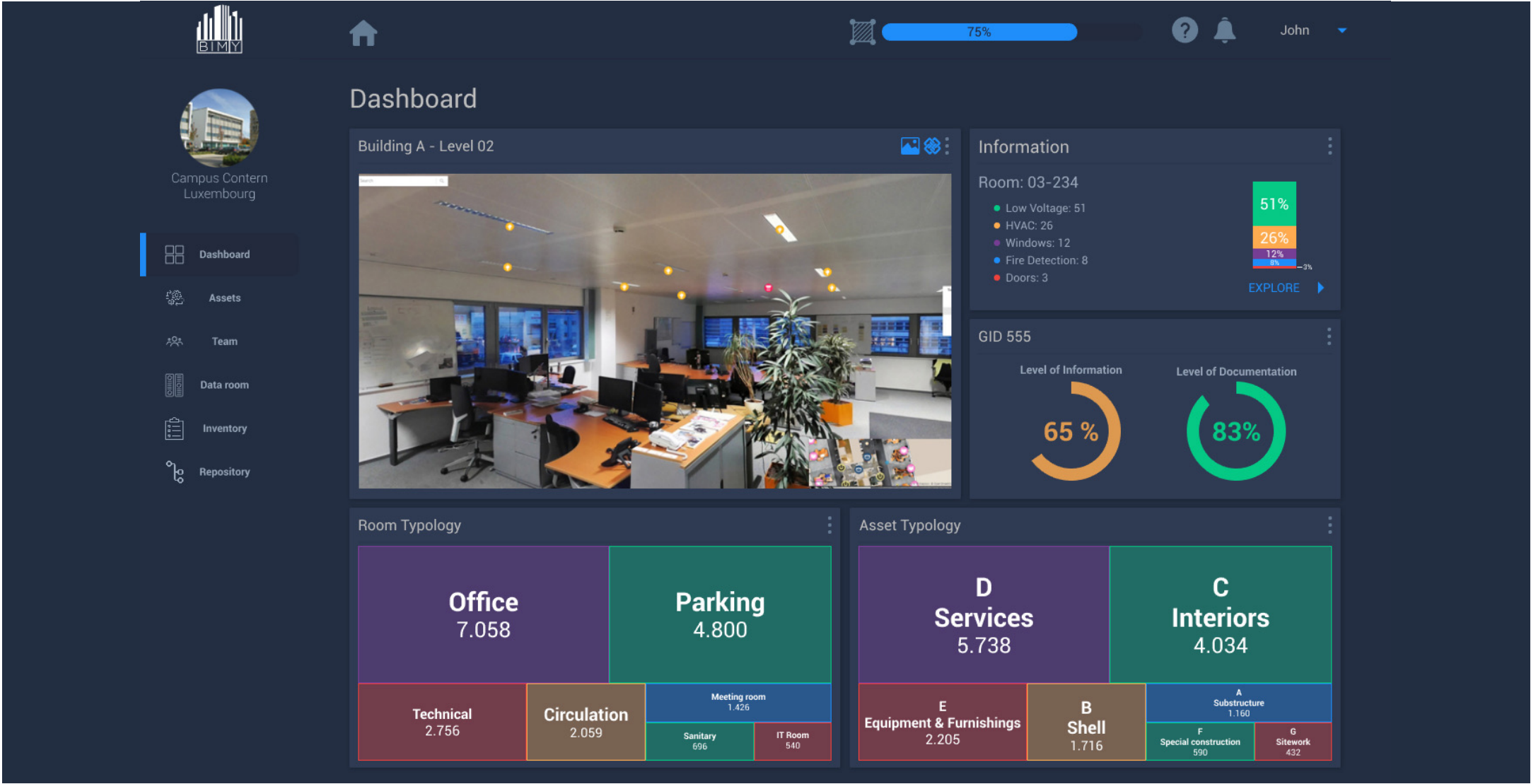
Physical Properties

Name	Value	Unit
Length	270	mm
Width	280	mm
Height	3.7	ml
Volume		
Color	Gris	

Electrical Properties

Book it!

Tableau de bord



Référentiel



75%



John



Campus Contern
Luxembourg



Dashboard



Assets



Team



Data room



Inventory



Repository

Repository

List

GID xxx

[DETAIL ▶](#)

Country: Luxembourg
Classification: UNIFORMAT II
Description: It defines on a scale of 1 to 5, the LOD, the LOI and the level of documentation
Managed by: CRTI-B / www.digitalbuilding.lu

NBS

[DETAIL ▶](#)

Country: United Kingdom
Classification: Uniclass 2015
Description: It defines on a scale of 2 to 6 the Level of Information
Managed by: NBS / www.nbs.com

Detail

Space	Infrastructure	Superstructure	Finishing	Transportation	Drainage	...
Standard Foundation	Special Foundation	Wall for Subgrade Enclosure	Standard Slabs-on-Grade	Structural Slabs-on-Grade	Slabs-on-Grade Supplementary Components	
LEVEL OF DETAIL		LEVEL OF INFORMATION		LEVEL OF DOCUMENTATION		
Title		x1x	x2x	x3x	x4x	x5x
Naming / Name		X	X	X	X	X
Naming / Tag				If required	If required	If required
Classification		X	X	X	X	X
Type			X	X	X	X
Statut		X	X	X	X	X
Material			X	X	X	X
Method of construction				X	X	X
Reinforcement Volume Ratio				X	X	X
Load Bearing		X	X	X	X	X

Inventaire



75%



John



Campus Contern
Luxembourg



Dashboard



Assets



Team



Data room



Inventory



Repository

Inventory

Select the assets



Add documents



Light3269.pdf

Data sheet



Diag_2045.pdf

Schematic





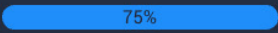


Inst_mont.pdf


Manual



CONFIRM THE PAIRING

Gestion des équipements

John



Campus Contern
Luxembourg

Dashboard

Assets

Team

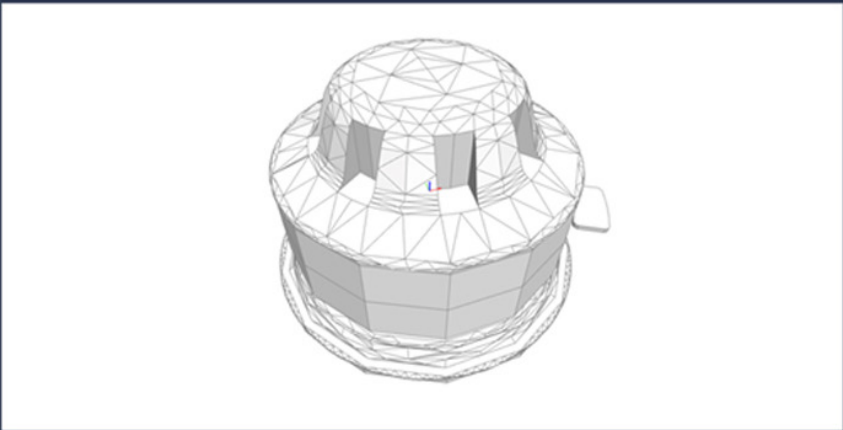
Data room

Inventory

Repository

Asset board

Code: CC1_AL_00_OFFB01_LC_FDE_06_BR_001
Uniclass: Pr_75_75_30_65 - Point smoke detectors



General

- Accessibility Performance: n/a
- Asset Identifier: n/a
- Asset Type: Fixed
- Bar Code: n/a
- Code Performance: EN 54-7
- Color: White
- Constituents: n/a
- Description: Discovery optical smoke detector
- Expected Life: 10 Years
- Features: Works using the light scatter principle and is ideal for applications where slow-burning or smouldering fires as likely
- Finish: Gloss
- Grade: n/a
- Installation Date: 10.08.2003
- Manufacturer: Apollo fire

Attribute

Electrical Property Set

Asset Property Set

Material Passport

Data Quality

GENERAL	ATTRIBUTE	ELECTRICAL PROPERTY	ASSET PROPERTY	MATERIAL PASSPORT
85.2 % ↑	100 % =	72.6 % ↓	61.8 % ↑	45.3 % ↓

Data room



75%



John



Campus Contern
Luxembourg



Dashboard



Assets



Team



Data room



Inventory



Repository

Data Room

... / Fire Protection / Sprinkling / Datasheet



LAST

FIRST

SIZE

A-Z

Datasheet



Gestion des intervenants



75%



John



Campus Contern
Luxembourg



Dashboard



Assets



Team



Data room



Inventory



Repository

Team



Group	Authority	Name	Role	Company	Country	
Architect	Admin	John Doe	Architect	Architectura +	Luxembourg	EDIT ►
Engineer	Editor	Vanessa Smith	HVAC Engineer	SGI	France	EDIT ►
Builder	Publisher	Ignacio Garcia	Project Manager	Vinci	France	EDIT ►
Pending validation						
Owner	Admin	Sophie Muller	Invitation sent on: April, 12 2021 at 2:30 PM			RESEND INVITATION ►



Respect people and nature
Advocate gender equality
Promote social inclusion
Share your knowledge
Help each other

Thank you !

Jean-Yves Marié

team@bim-y.com / +352 691 458 788

www.bim-y.com

Photo credit: Jose A. Thompson, Unsplash.com

